

NEW/LIGHT

The Masters of Luminous Ceilings and Walls





Backlit Stretch Ceiling and Wall Systems

NEW/LIGHT _____	P. 6
NEW/LIGHT & NEW/ACOUSTIC ____	P. 8
NEW/LIGHT 3D _____	P. 11
NEW/LIGHT & NEW/GRAPHIC ____	P. 14
Light Transmission _____	P. 16
Lighting Guidelines _____	P. 18
Technical Details _____	P. 24
Profiles _____	P. 62
Membrane Options _____	P. 64

Client GUGGENHEIM Museum / New York, NY, USA

Specifier James Turrell / Artist

Product NEW/ACOUSTIC white matte micro-perforated membranes front lighted with LED

Client Northwest World Gateway / McNamara Terminal / Detroit, MI, USA

Specifier SmithGroup / Architect

Product NEW/LIGHT single-layer system using T0B2 / White Translucent membranes backlit with Color Kinetics projectors





NEW/LIGHT allows you to create beautiful and functional spaces using a variety of systems for backlit applications

NEW/LIGHT can be used for accent or main lighting with a variety of light sources, including natural, fluorescent, LED, halogen, neon, etc. Whichever light source you choose, the layout will be critical to the final outcome, since NEW/LIGHT is only a diffuser. Based on the light source, the NEW/LIGHT membrane, and the depth of your plenum, we will make recommendations for the ideal layout for your lighting design intent.

NEW/LIGHT offers numerous translucent membranes in various colors and light transmissions that will allow you to tailor your final result to meet your required lighting performance for color, evenness, and power.

For all horizontal NEW/LIGHT applications, we strongly recommend using a double-layer system. The main function of the upper layer is to act as a dust barrier and ensure the longevity of the aesthetics of the system. However, this second layer can also be used as an added diffuser if needed.

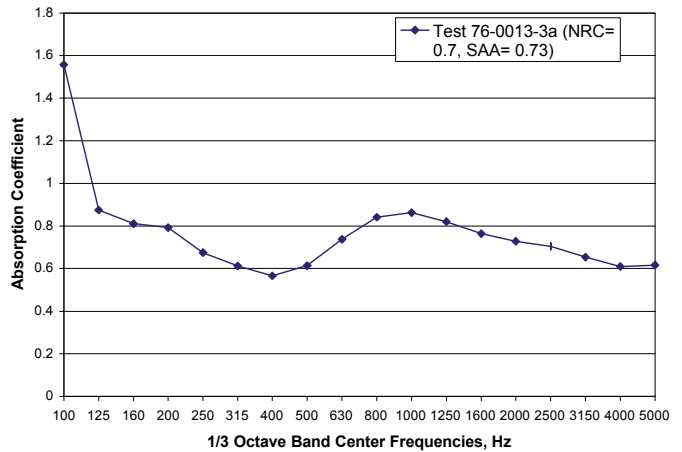
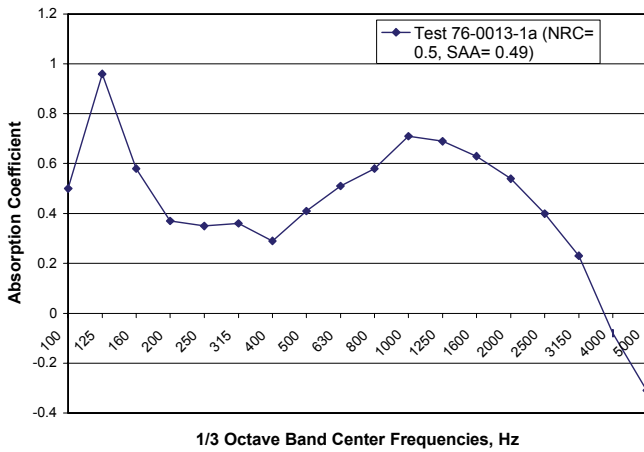


NEW/LIGHT & NEW/ACOUSTIC

NEW/LIGHT as a single or a double-layer system can be micro-perforated to become not only a lighting system but also an acoustical absorber.

Process

Through its patented micro-perforation technology, NEW/LIGHT can provide a variety of acoustical absorptions with or without acoustical backing material. Below are a few graphs of sound absorption for single and double-layer systems.



Freq. Hz	4" Cavity Depth			6" Cavity Depth			8" Cavity Depth		
	Fill Arrangement			Fill Arrangement			Fill Arrangement		
	No Fill	1" thk. 6# F/glass	2" thk. 3# F/glass	No Fill	1" thk. 6# F/glass	2" thk. 3# F/glass	No Fill	1" thk. 6# F/glass	2" thk. 3# F/glass
50	-0.03	0.13	0.08	0.21	-0.07	0.09	0.14	-0.14	0.04
63	0.29	0.19	0.19	0.04	0.17	0.20	0.10	0.13	0.32
80	0.21	0.26	0.29	0.28	0.27	0.30	0.24	0.27	0.21
100	0.63	0.46	0.63	0.56	0.62	0.70	0.24	0.28	0.42
125	0.31	0.33	0.39	0.97	0.63	0.77	0.36	0.51	0.69
160	0.43	0.44	0.68	0.74	0.87	0.99	0.80	0.90	1.19
200	0.36	0.42	0.87	0.71	0.85	1.09	0.62	0.76	1.06
250	0.38	0.64	1.00	0.81	0.83	1.05	0.56	0.79	0.91
315	0.51	0.84	0.98	0.85	0.74	0.85	0.50	0.58	0.67
400	0.66	0.95	0.93	0.80	0.77	0.80	0.49	0.61	0.60
500	0.82	0.77	0.78	0.51	0.60	0.65	0.42	0.48	0.55
630	0.62	0.72	0.73	0.51	0.58	0.65	0.45	0.52	0.58
800	0.63	0.67	0.72	0.54	0.62	0.68	0.53	0.62	0.66
1000	0.70	0.72	0.77	0.69	0.73	0.77	0.67	0.74	0.76
1250	0.73	0.74	0.76	0.71	0.77	0.69	0.73	0.75	0.75
1600	0.64	0.65	0.66	0.64	0.67	0.67	0.63	0.66	0.65
2000	0.57	0.57	0.58	0.55	0.57	0.55	0.58	0.57	0.57
2500	0.48	0.48	0.48	0.50	0.49	0.49	0.48	0.48	0.48
3150	0.40	0.42	0.42	0.44	0.42	0.42	0.42	0.43	0.43
4000	0.36	0.36	0.36	0.40	0.36	0.38	0.39	0.39	0.39
5000	0.33	0.33	0.33	0.41	0.34	0.35	0.38	0.39	0.39
6300	0.26	0.26	0.26	0.40	0.22	0.27	0.32	0.32	0.37
8000	0.20	0.20	0.17	0.36	0.12	0.21	0.32	0.32	0.36
10000	-0.02	-0.02	0.05	0.38	-0.02	0.07	0.23	0.23	0.30
NRC	0.55	0.70	0.80	0.80	0.70	0.75	0.55	0.65	0.67
SAA*	0.87	0.88	0.77	0.80	0.89	0.75	0.85	0.83	0.89

Freq. Hz	4" Cavity Depth			6" Cavity Depth			8" Cavity Depth		
	Fill Arrangement			Fill Arrangement			Fill Arrangement		
	No Fill	1" thk. 6# F/glass	2" thk. 3# F/glass	No Fill	1" thk. 6# F/glass	2" thk. 3# F/glass	No Fill	1" thk. 6# F/glass	2" thk. 3# F/glass
50	-0.08	0.11	0.09	-0.08	0.01	-0.03	0.07	-0.05	-0.29
63	0.20	0.18	0.24	0.24	0.17	0.12	0.13	0.13	0.12
80	0.33	0.28	0.30	0.18	0.29	0.18	0.15	0.27	0.12
100	0.49	0.60	0.56	0.57	0.46	0.68	0.18	0.26	0.38
125	0.23	0.32	0.45	0.54	0.62	0.73	0.33	0.47	0.54
160	0.40	0.45	0.60	0.66	0.75	0.92	0.57	0.68	0.86
200	0.31	0.47	0.71	0.57	0.72	1.00	0.49	0.66	0.98
250	0.30	0.55	0.95	0.47	0.69	1.02	0.50	0.74	1.00
315	0.41	0.74	0.99	0.50	0.69	0.86	0.44	0.58	0.74
400	0.52	0.85	0.99	0.52	0.74	0.87	0.42	0.63	0.72
500	0.55	0.80	0.83	0.46	0.64	0.70	0.37	0.49	0.58
630	0.55	0.76	0.78	0.47	0.61	0.69	0.38	0.50	0.59
800	0.55	0.66	0.66	0.71	0.45	0.55	0.64	0.38	0.51
1000	0.51	0.61	0.67	0.44	0.59	0.64	0.48	0.63	0.65
1250	0.44	0.54	0.62	0.41	0.57	0.58	0.48	0.60	0.61
1600	0.37	0.52	0.57	0.44	0.58	0.58	0.45	0.55	0.57
2000	0.42	0.55	0.54	0.44	0.57	0.57	0.44	0.54	0.55
2500	0.43	0.55	0.51	0.41	0.53	0.54	0.42	0.49	0.52
3150	0.38	0.51	0.47	0.40	0.48	0.46	0.40	0.45	0.47
4000	0.33	0.46	0.39	0.35	0.41	0.39	0.38	0.38	0.43
5000	0.27	0.44	0.35	0.31	0.35	0.33	0.35	0.36	0.39
6300	0.23	0.44	0.29	0.25	0.30	0.22	0.30	0.25	0.36
8000	0.12	0.41	0.18	0.19	0.20	0.14	0.28	0.19	0.31
10000	0.01	0.43	0.01	0.03	0.05	-0.03	0.23	0.04	0.22
NRC	0.45	0.65	0.75	0.45	0.62	0.75	0.45	0.60	0.70
SAA*	0.45	0.63	0.74	0.47	0.60	0.72	0.44	0.58	0.67

*Sound Absorption Coefficient, SAA, per ASTM C423.
 †Test environment conditions listed were those present during empty room measurements and during specimen measurement respectively (e.g., "empty room temperature with specimen temp.")

*Sound Absorption Coefficient, SAA, per ASTM C423.
 †Test environment conditions listed were those present during empty room measurements and during specimen measurement respectively (e.g., "empty room temperature with specimen temp.")

Client Covington & Burling / Washington, DC, USA
 Specifier LSM / Architects

Product NEW/LIGHT and NEW/ACOUSTIC double-layer system using ACTOB / White Translucent micro-perforated membranes backlit with GE Tetra grid



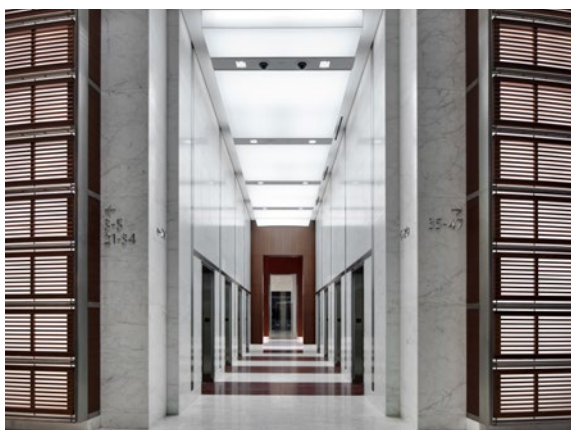
一座孕育文化 与生活艺术的创造之园

A CAPITAL OF CREATION DEDICATED
TO CULTURE AND THE ART OF LIVING



NEW/LIGHT 3D

Because of their flexible nature, the NEW/LIGHT membranes can be used to create shapes and forms for 3D applications. The lighting in this case must be strategically placed to minimize the shadows from the 3D structure.



Client Paris Ile de France Pavilion at 2010 World Expo / Shanghai, China

Specifier MOSTRA / Architect

Product NEW/LIGHT 3D system using T0B / White Translucent membranes with digital front and rear projection

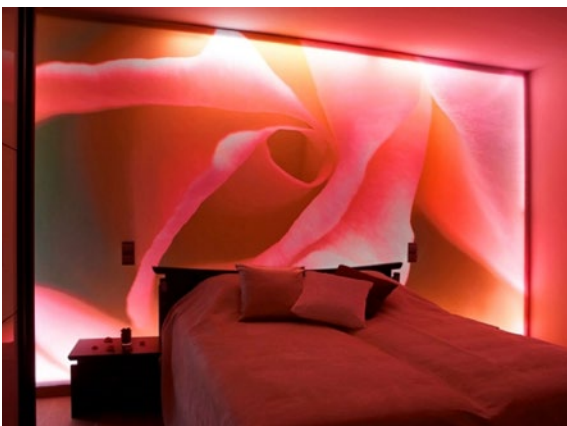
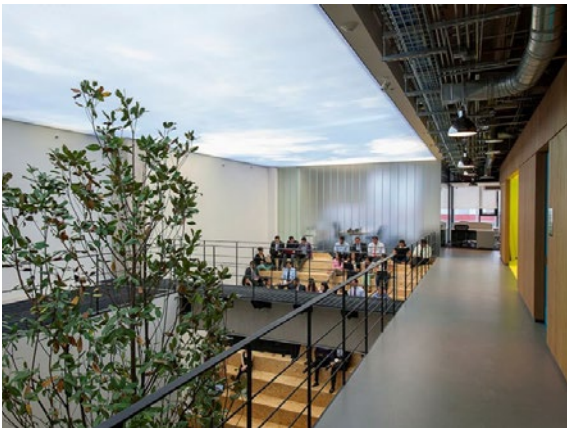
Client Centre Commercial Val d'Europe / Senlis, France
Specifier BENOY / Architect
Product NEW/LIGHT double layer system using T0B3M/Soft White Translucent backlit with LED





NEW/LIGHT & NEW/GRAPHIC

The NEW/LIGHT membranes can be printed with a custom graphic of your choice. Please ask us for our requirements for the graphic file you will need to provide in order to achieve your design intent.



Client W Hotel / San Francisco, CA, USA

Specifier Stanley Saitowitz Office / Architect

Product NEW/LIGHT and NEW/GRAPHIC system using T0B / White Translucent membranes with custom print and backlit with LEDs



LIGHT TRANSMISSION.

Below is a table of the light transmissions for various NEW/LIGHT translucent membranes calculated at various distances. The table also provides the average light transmission between different distances.

Light Transmission Testing on NEWMAT Translucent Membranes

	at 0"	A) at 24"	B) at 36"	C) at 53"	Average A - C	Average A - B - C
Without membrane	7130	1546	798	541	1043.5	962
T0B	5750	797	458	303	550	519
Transmission	81%	52%	57%	56%	53%	54%
T0B 1320	6150	979	507	335	657	607
Transmission	86%	63%	64%	62%	63%	63%
T0B2	5850	958	445	297	627.5	567
Transmission	82%	62%	56%	55%	60%	59%
T0B 3M	6100	959	484	320	639.5	588
Transmission	86%	62%	61%	59%	61%	61%
T0B 3S	5970	930	480	317	623.5	576
Transmission	84%	60%	60%	59%	60%	60%
T0B 33006 Boréal	6030	955	492	322	638.5	590
Transmission	85%	62%	62%	60%	61%	61%
T0B4	5650	913	458	292	602.5	554
Transmission	79%	59%	57%	54%	58%	58%
T0B5	5990	986	506	331	658.5	608
Transmission	84%	64%	63%	61%	63%	63%
T0B6	6410	1203	629	418	810.5	750
Transmission	90%	78%	79%	77%	78%	78%
T1	6650	1429	752	497	963	893
Transmission	93%	92%	94%	92%	92%	93%
T10-1320	6820	1484	766	506	995	919
Transmission	96%	96%	96%	94%	95%	96%
T11	6640	1461	764	505	983	910
Transmission	93%	95%	96%	93%	94%	95%
T3	3500	646	331	211	428.5	396
Transmission	49%	42%	41%	39%	41%	41%
T4	5190	908	470	306	607	561
Transmission	73%	59%	59%	57%	58%	58%
TX04	5800	926	460	295	610.5	560
Transmission	81%	60%	58%	55%	59%	58%

Client Private Collector's Loft / New York, NY, USA

Specifier Renfro Design Group / Lighting Designer

Product NEW/LIGHT double-layer system using T0B / White Translucent membranes backlit with GE Tetra grid



LIGHTING GUIDELINES.

While we are not lighting designers, in order to assist you with your design of a NEW/LIGHT backlit application, we provide lighting guidelines to ensure that the final result meets your expectations.

The functional and aesthetic success of a NEW/LIGHT backlit installation is entirely related to the design and specification of the lighting sources behind the NEW/LIGHT membranes.

NEW/LIGHT backlit applications may vary in the design and construction of the perimeter of the backlit area. Various options for same include the following: drywall coffers, free-floating lightboxes, free-floating panels/clouds, wall-to-wall ceilings, prefabricated panels, etc.

Many types of light sources can be used to backlight a NEW/LIGHT application, which include but are not limited to: fluorescents, cold cathodes, neon, LED, pipe light, fiber optics, etc. Most applications today use LED fixtures, and because LED fixtures vary greatly from one manufacturer / system to another, we strongly recommend that you do a mock-up of your configuration with the exact LED fixture you will be using to determine the necessary depth of your plenum and the lighting layout of your LED fixtures.

Penetrations for sprinkler heads, HVAC registers, etc. can be made in a NEW/LIGHT system. However, the pipe, duct, and/or support for such penetrations must be painted white to minimize the shadow from same.

Before cleaning any ceiling membrane, it is important to know the nature of the soil. If the membrane is covered with only a small film of dust, you can use either a feather duster or a compressor and just blow the membrane evenly. If you try to use a micro-fiber towel with or without a cleaning product, you could make the situation worse. If the ceiling membrane has any soil other than dust, clean it with a micro-fiber towel only and a cleaning solution we will recommend based on the nature of the soil.

For most backlit applications, accessibility is required to maintain or repair the light source behind the membrane. The procedure to remove and reinstall the membrane will vary depending on the system being used. We will provide you with the necessary instructions for accessing the light source behind your specific NEW/LIGHT system.





Client Spa Aquatic / Nantes, France
Specifier Cabinet Enet Dolowy / Architect

Product NEW/LIGHT and NEW/ACOUSTIC system using ACT0B3 / Soft White Translucent and ACT10 / Clear micro-perforated membranes



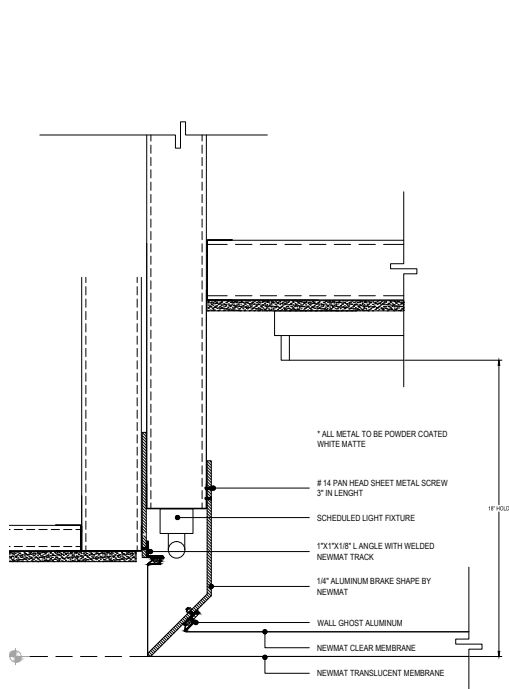
Client Chanel Soho / New York, NY, USA
Specifier Peter Marino Architect / Architect
Product NEW/LIGHT double-layer system using T0B / White Translucent membranes backlit with fluorescents



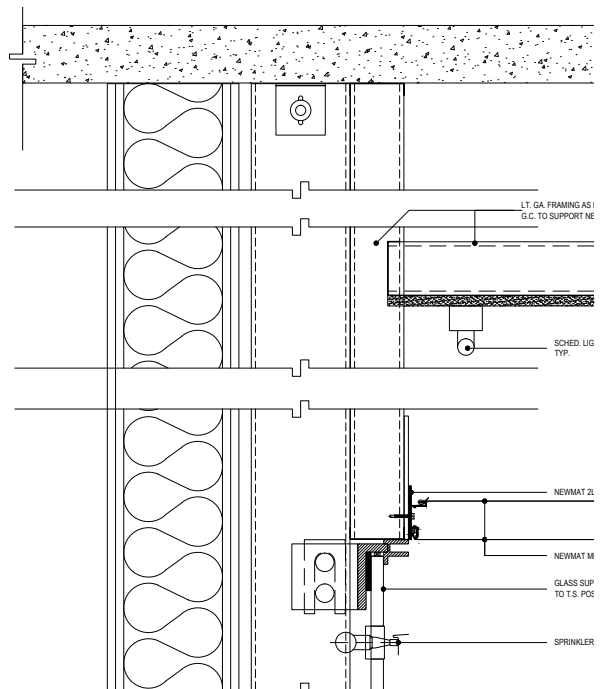


DETAILS.

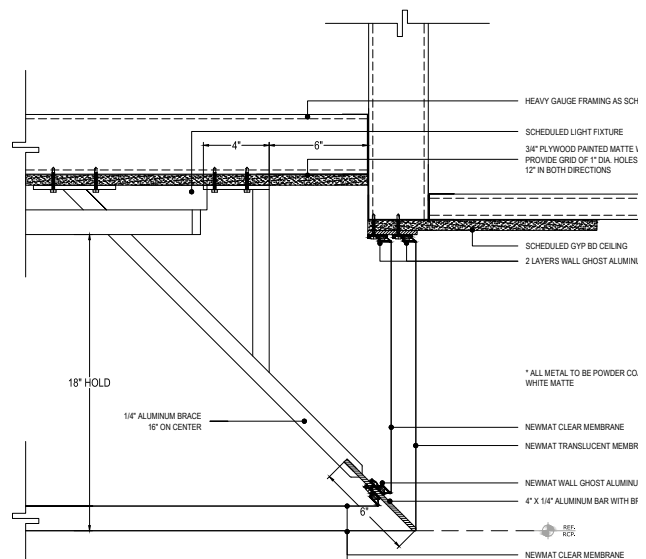
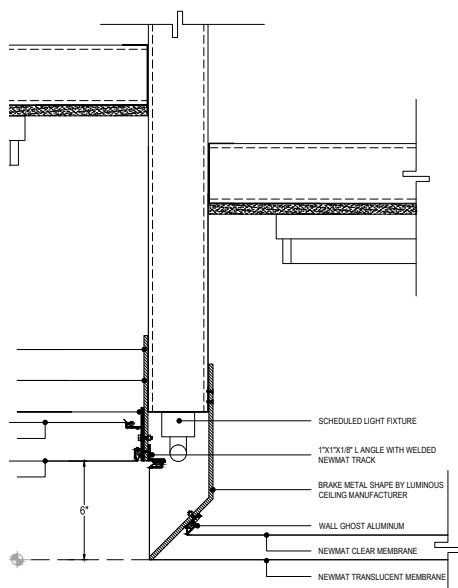
Below are some of the details we have engineered for our projects. We often create and extrude new profiles to meet the design or technical needs of a specific project.



SECTION @ VERTICAL STEP
SCALE: 3/4" = 1"



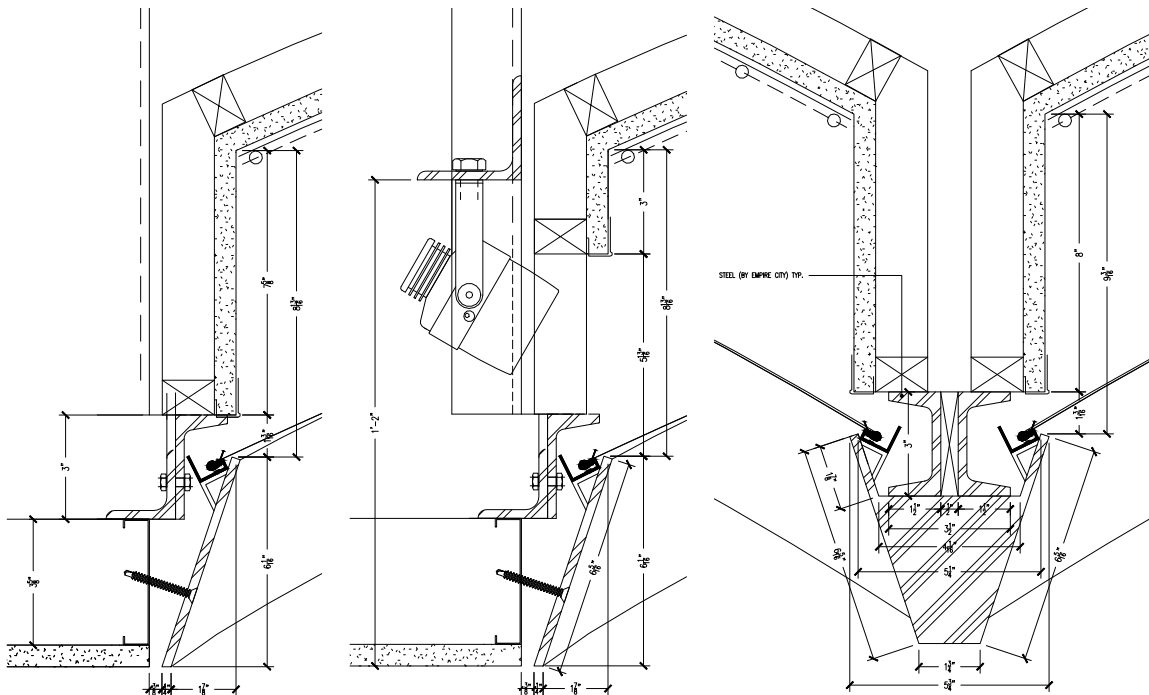
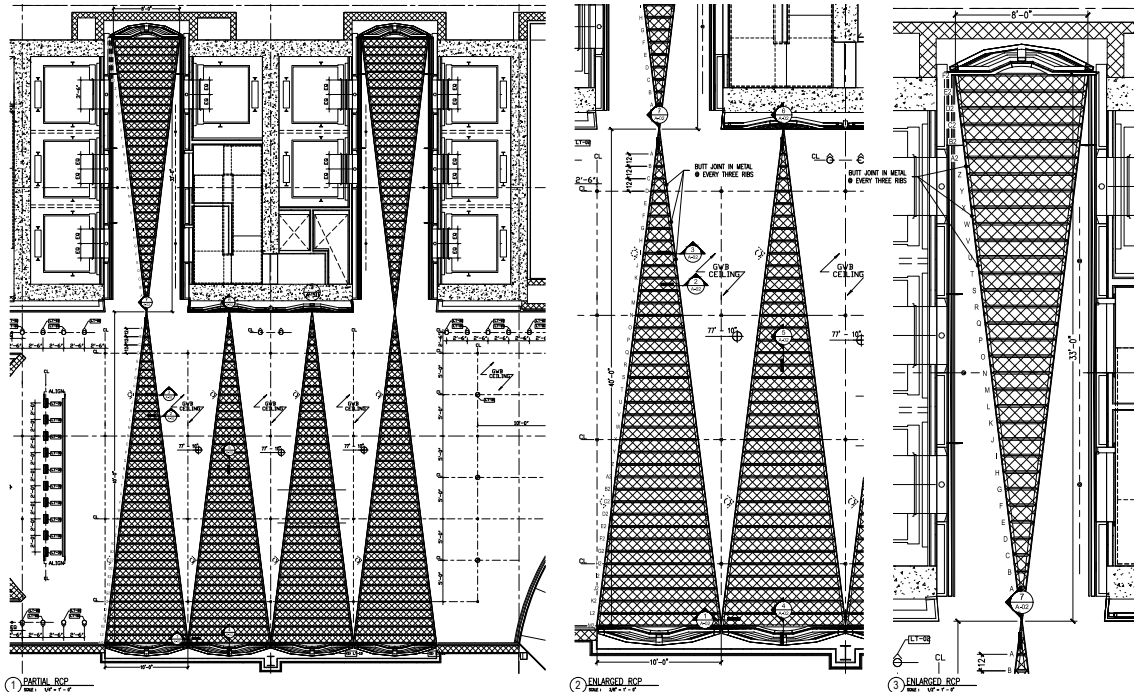
04 SECTION @ GLASS PANEL
SCALE: 3/4" = 1"





DETAILS.

Below are some of the details we have engineered for our projects. We often create and extrude new profiles to meet the design or technical needs of a specific project.



Client 7 Bryant Park / New York, NY, USA

Specifier Pei Cobb Freed / Architect

Product NEW/LIGHT 3D system with T0B3M / Soft White Translucent membranes over custom aluminum structure backlit with LED nodes

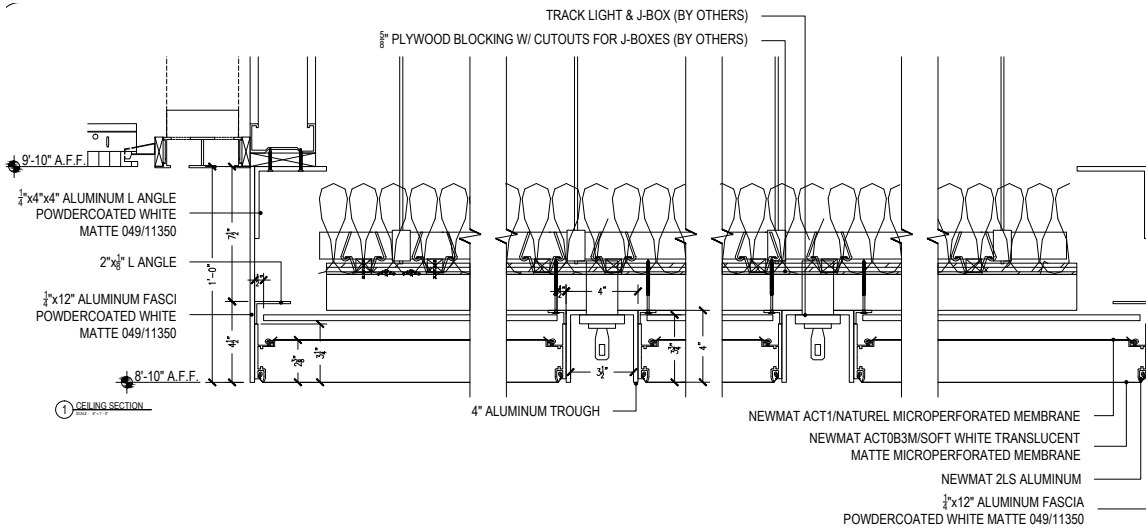
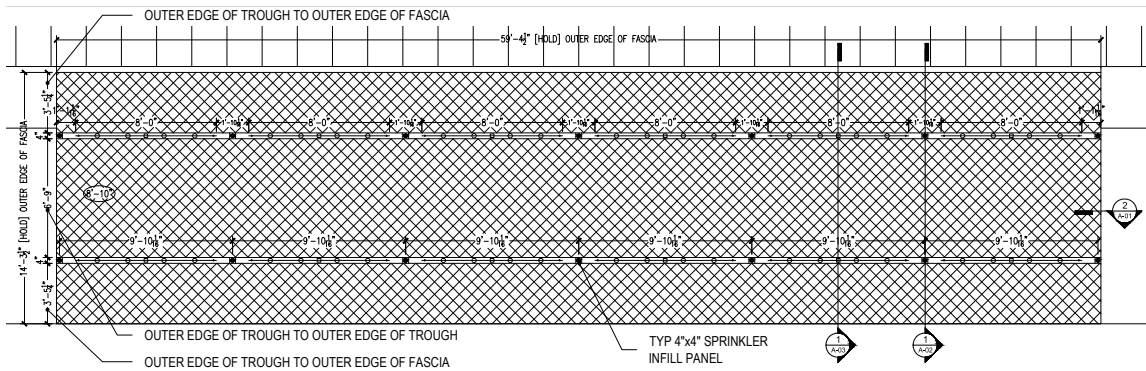


中國銀行
BANK OF CHINA



DETAILS.

Below are some of the details we have engineered for our projects. We often create and extrude new profiles to meet the design or technical needs of a specific project.



Client Biotronik Showroom / New York, NY, USA

Specifier Ted Moudis Associates / Architect

Product NEW/LIGHT and NEW/ACOUSTIC double-layer system using ACT0B3M / Soft White Translucent and ACT11 / Clear Frosted micro-perforated membranes backlit with Apogee LED fingerboards





Client Github / San Francisco, CA, USA
Specifier Rapt Studio / Architect

Product NEW/LIGHT 3D wall system using T0B1320 / White Translucent membranes backlit with LED strips



Client Nissan Crossing Ginza / Tokyo, Japan

Specifier Eight Inc / Designer

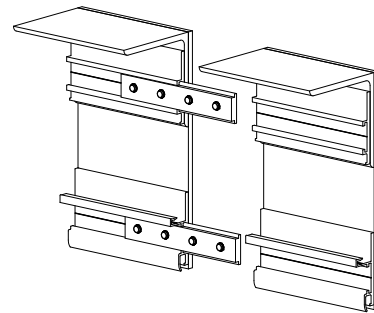
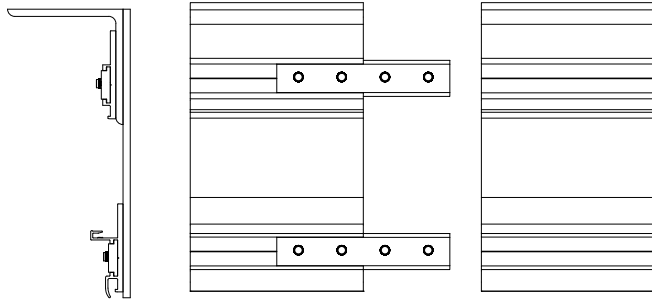
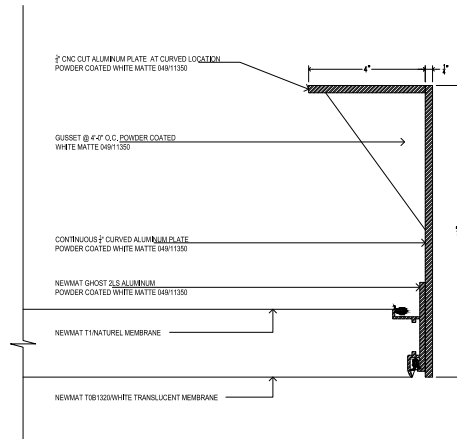
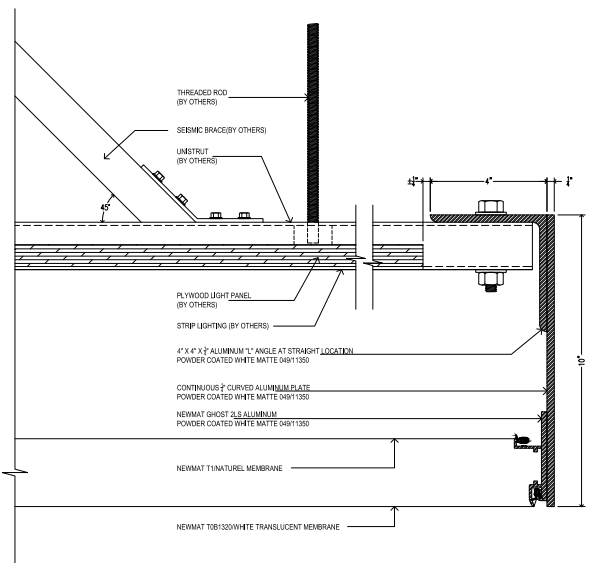
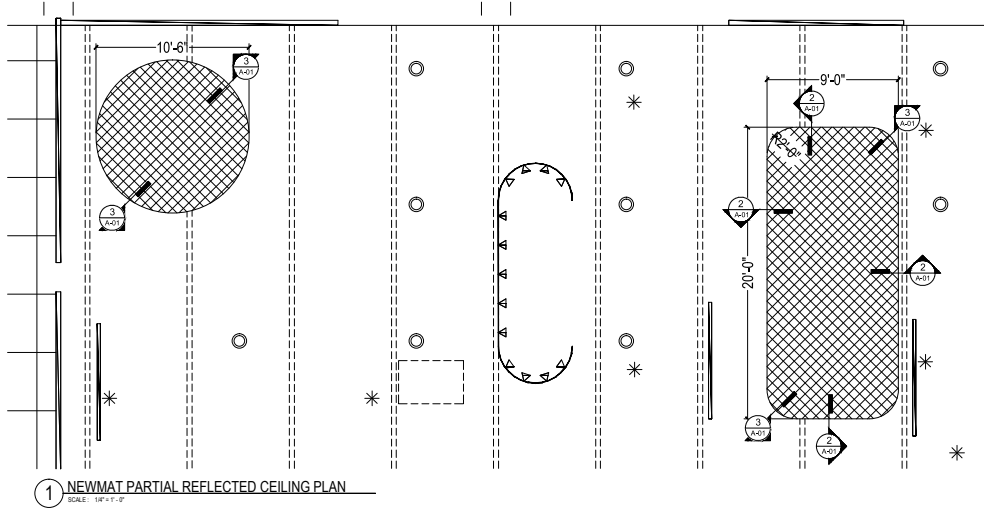
Product NEW/LIGHT double-layer system using T0B3S / Soft White Translucent membranes backlit with LEDs





DETAILS.

Below are some of the details we have engineered for our projects. We often create and extrude new profiles to meet the design or technical needs of a specific project.



A JOINT SIDE VIEW
SCALE: 3/4" = 1'-0"

B JOINT FRONT VIEW
SCALE: 3/4" = 1'-0"

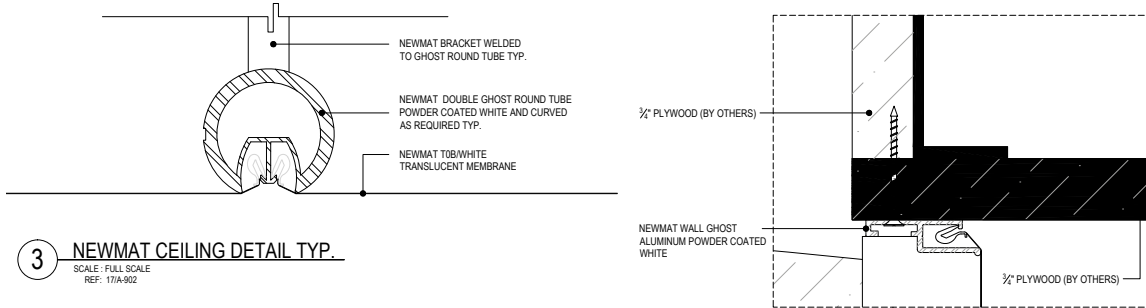
C JOINT ISOMETRIC VIEW
SCALE: NOT TO SCALE

Client HCL America / Seattle, WA, USA
Specifier Weaver / Architect
Product NEW/LIGHT double-layer free-floating lightbox system using T0B 1320 / White Translucent Wide Width and T1 / Natural membranes with custom aluminum fascias and backlit with LEDs

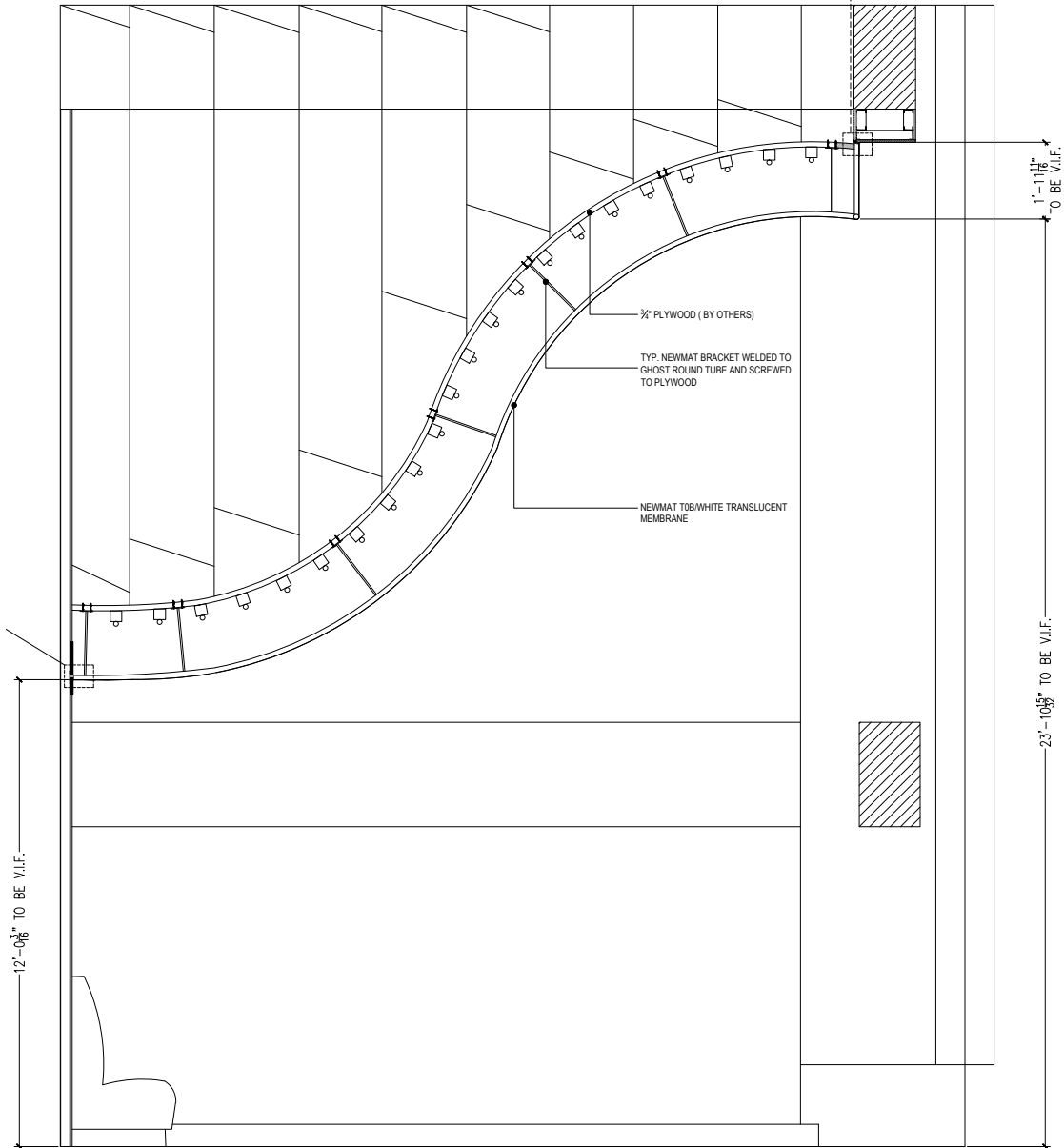


DETAILS.

Below are some of the details we have engineered for our projects. We often create and extrude new profiles to meet the design or technical needs of a specific project.



3 NEWMAT CEILING DETAIL TYP.
 SCALE: FULL SCALE
 REF: 171A-902



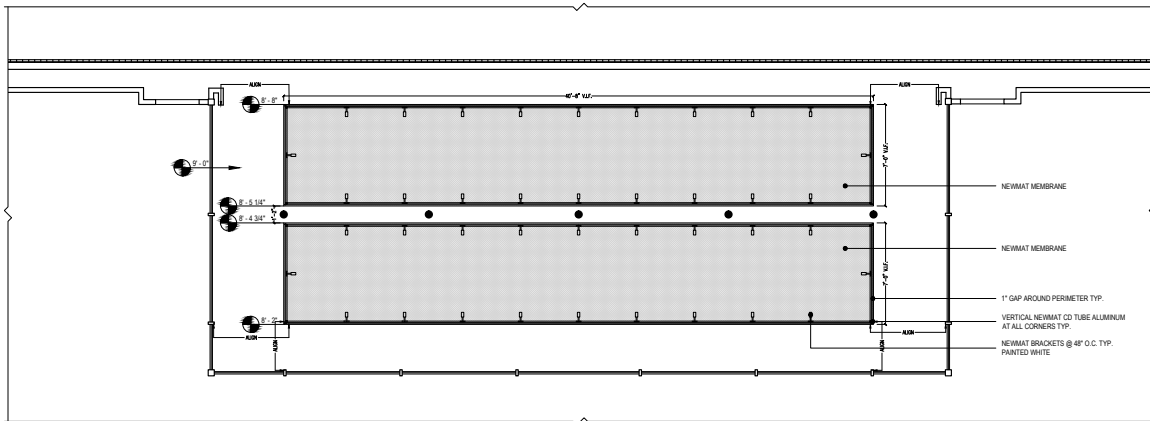
2 CURVED NEWMAT CEILING SECTION
 SCALE: 1/2" = 1'-0"
 REF: 11A-811

Client Hess Corporation / New York, NY, USA
Specifier TPG Architecture / Architect
Product NEW/LIGHT 3D system using TOB / White Translucent membrane with custom aluminum skeleton

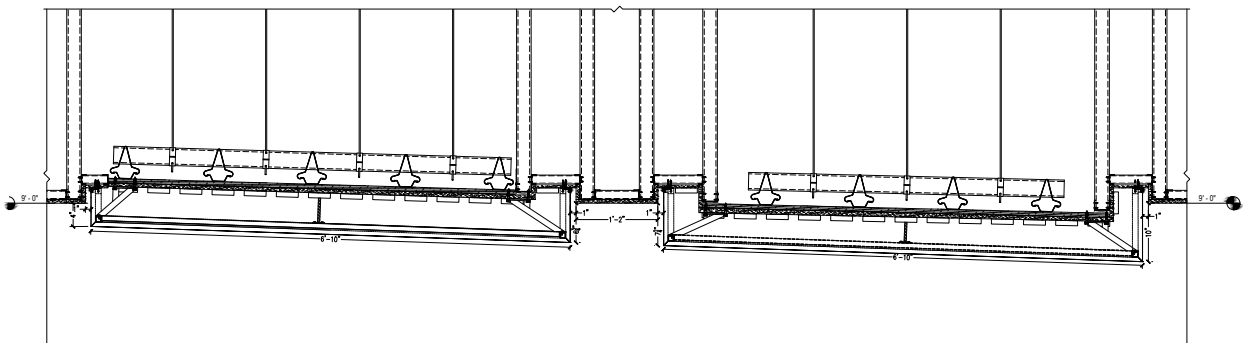


DETAILS.

Below are some of the details we have engineered for our projects. We often create and extrude new profiles to meet the design or technical needs of a specific project.



② CONFERENCE ROOM PARTIAL REFLECTED CEILING PLAN
SCALE: 1/8" = 1'-0"



① CONFERENCE ROOM CEILING CROSS SECTION
SCALE: 1/8" = 1'-0"

Client Mayer Brown / Washington, DC, USA

Specifier Gensler / Architect

Product NEW/LIGHT 3D system using T0B / White Translucent membrane with custom aluminum skeleton

MAYER • BROWN



Mayer Brown LLP



Client Philip Lim / Los Angeles, CA, USA

Specifier Leong Leong Architects / Architect

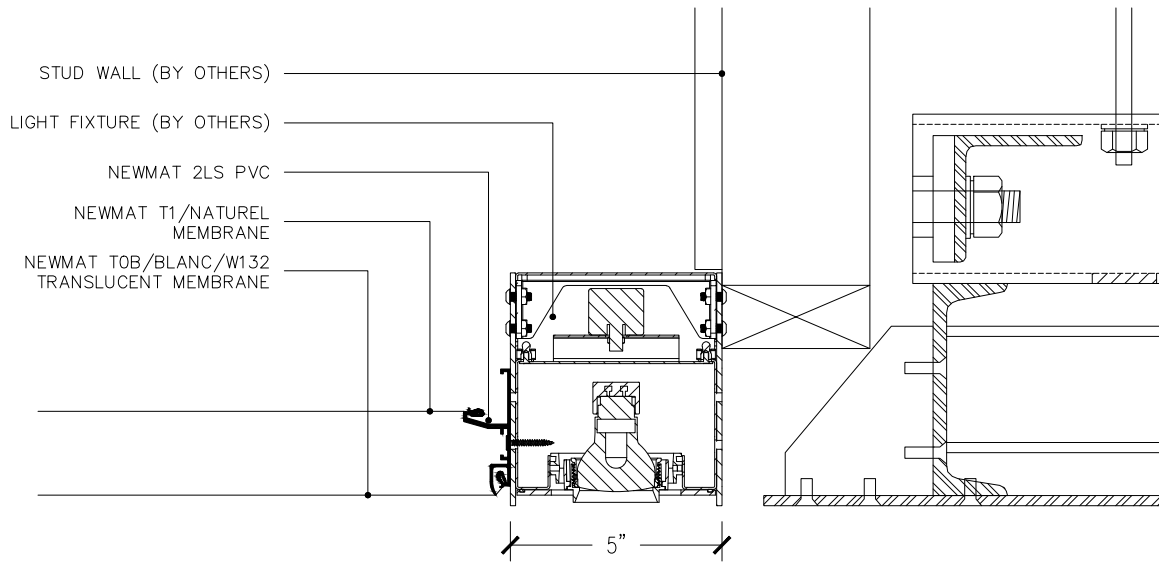
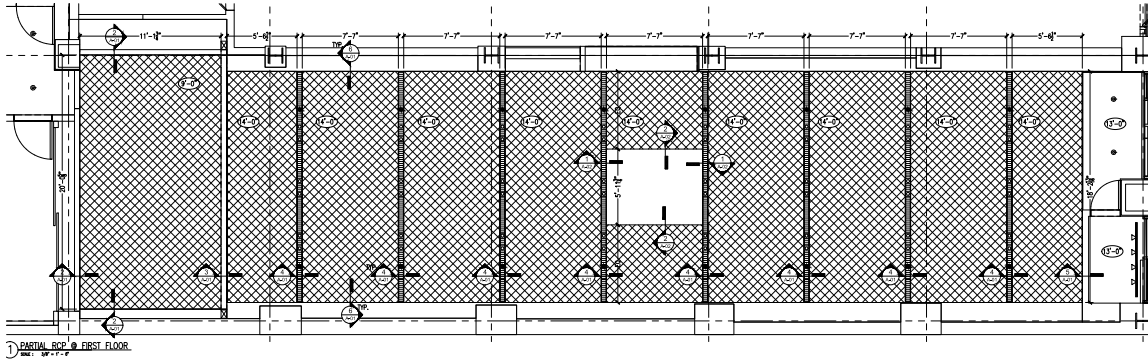
Product NEW/LIGHT double-layer system using T0B /White Translucent membranes backlit with fluorescents



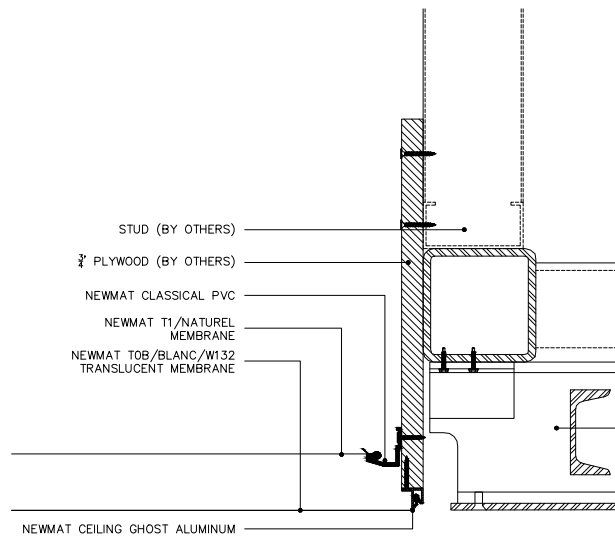


DETAILS.

Below are some of the details we have engineered for our projects. We often create and extrude new profiles to meet the design or technical needs of a specific project.



1) CEILING SECTION
SCALE: 6" = 1' - 0"



2) CEILING SECTION
SCALE: 6" = 1' - 0"

Client Nike Flight 23 / New York, NY, USA
Specifier TPG Architecture / Architect
Product NEW/LIGHT double-layer system using TOB1320 / White Translucent Wide Width membranes backlit with LEDs

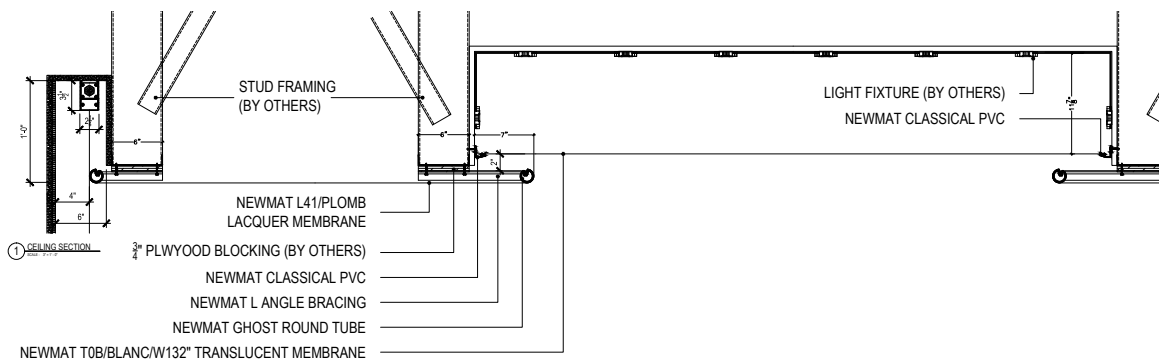
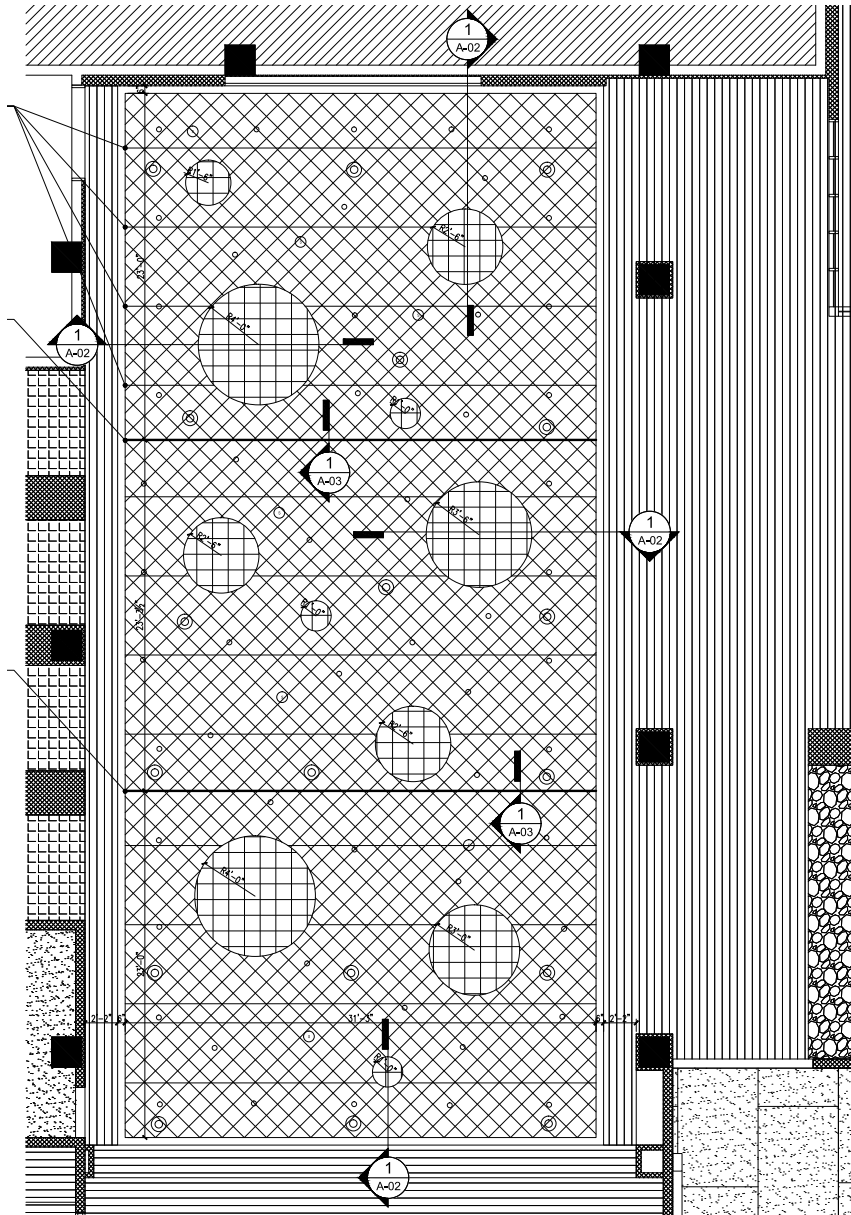


RISE TO THE MOMENT

NIKE AIR MAX
SUPERIOR RESPONSIVENESS TO ELEVATE YOUR GAME.
 Flight Plate Technology harnesses the energy of every step for explosive lift-off.
 Dynamic Fit provides a lock-down fit that moves with you.
 Reflective elements throughout for extra shine.

DETAILS.

Below are some of the details we have engineered for our projects. We often create and extrude new profiles to meet the design or technical needs of a specific project.



Client Riverside Center / New York, NY, USA

Specifier Icrave / Designer

Product NEW/LIGHT double-layer system using TOB1320 / White Translucent Wide Width membranes backlit with LED nodes



4 FEET 6 INCHES DEEP

4 FEET 6 INCHES DEEP



Client Tastyworks / Chicago, IL, USA

Specifier John Ronan Architects / Architect

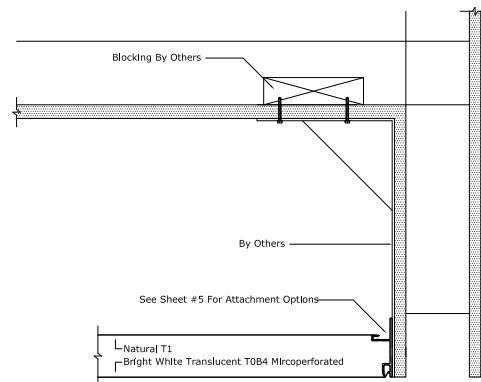
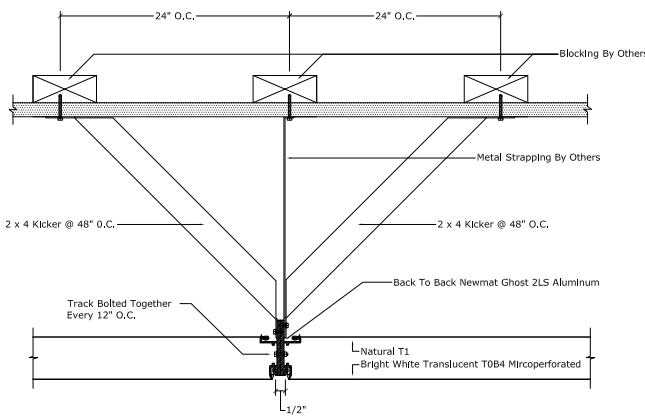
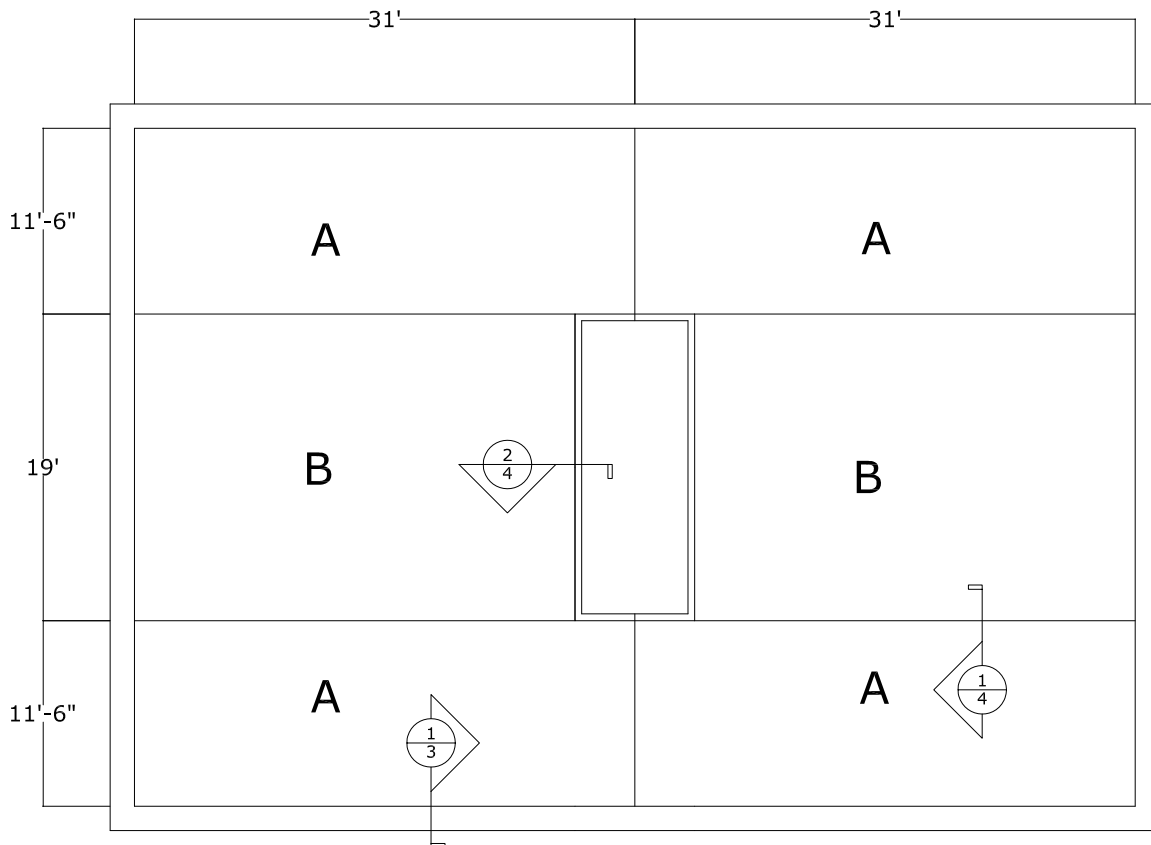
Product NEW/LIGHT 3D double-layer system using T0B / White Translucent membrane backlit with sporadic fluorescents





DETAILS.

Below are some of the details we have engineered for our projects. We often create and extrude new profiles to meet the design or technical needs of a specific project.

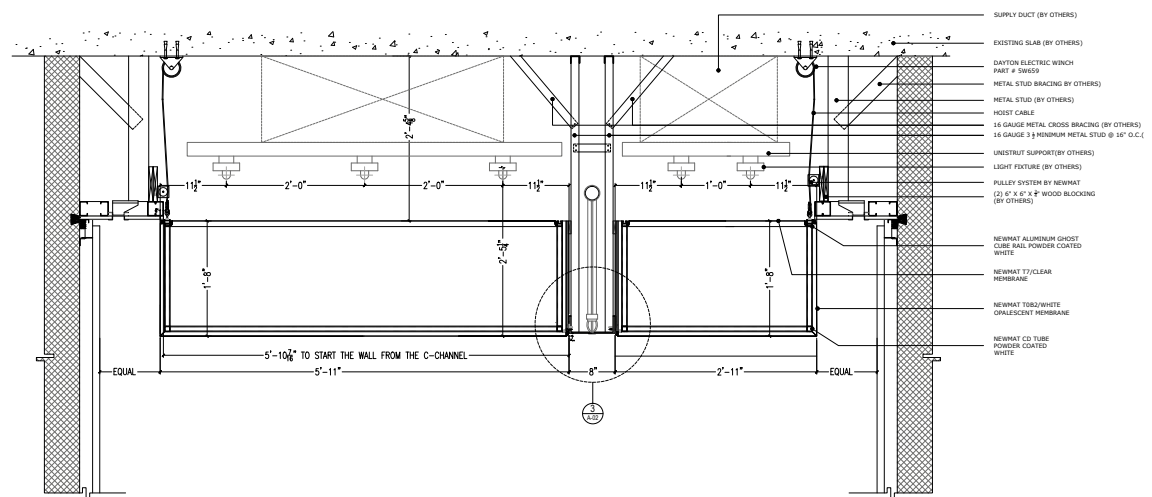
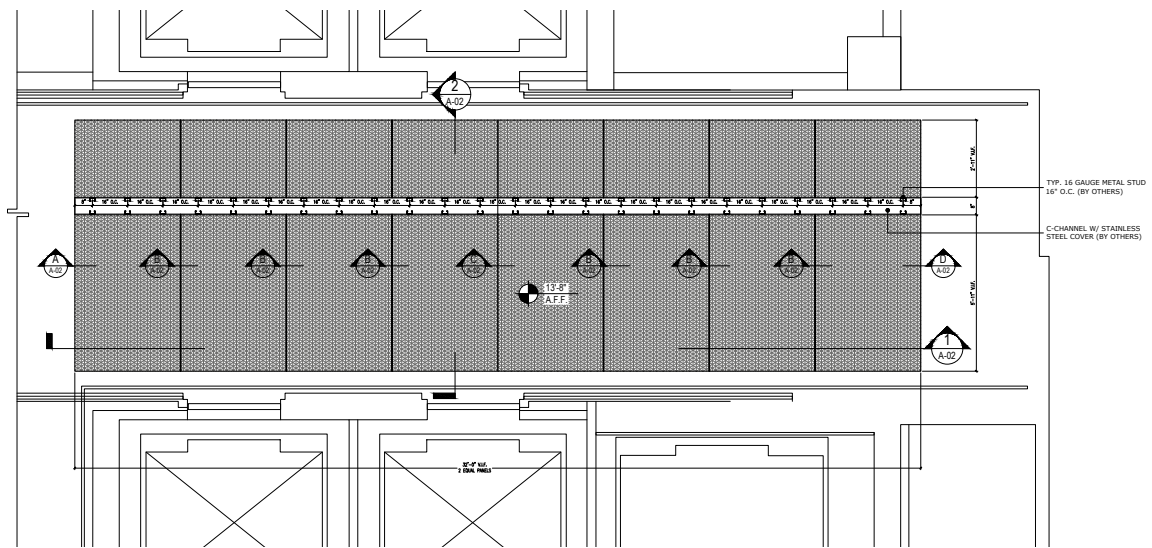


Client University of Arkansas / Fayetteville, AR, USA
Specifier Polk Stanley Wilcox Architects / Architect and Renfro Design / Lighting Designer
Product NEW/LIGHT and NEW/ACOUSTIC double-layer system using ACT0B3 / Soft White Translucent and T1 / Natural membranes



DETAILS.

Below are some of the details we have engineered for our projects. We often create and extrude new profiles to meet the design or technical needs of a specific project.

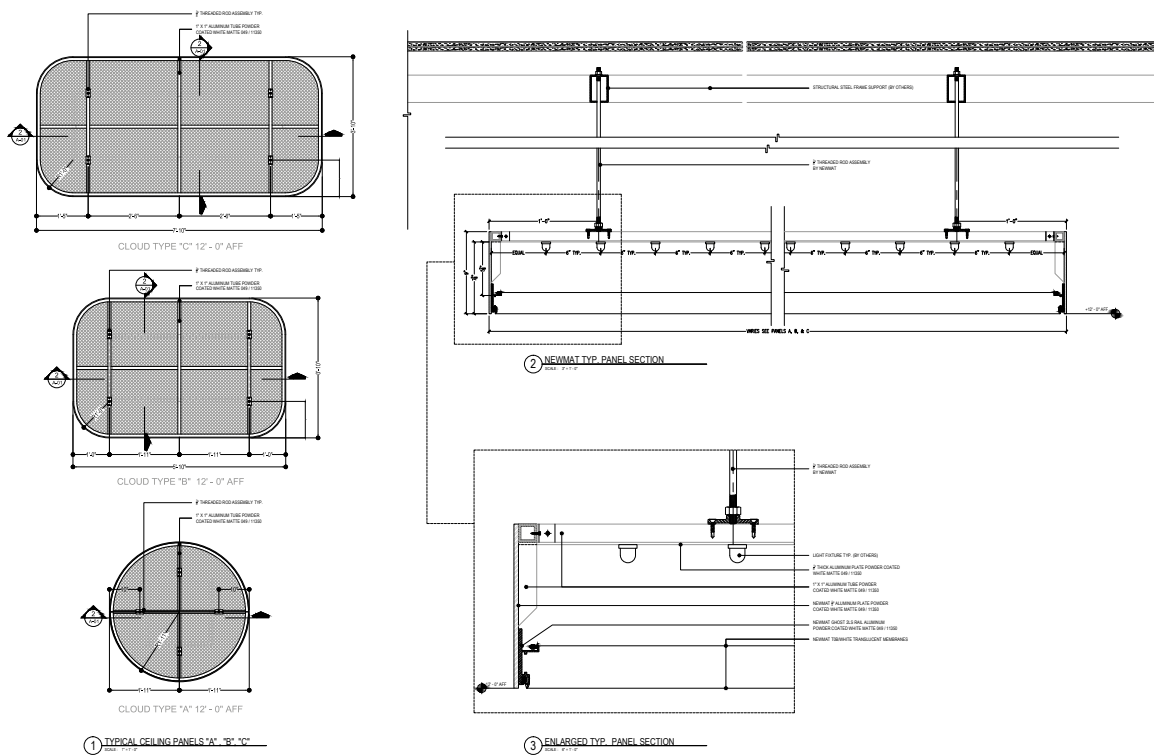


Client Democracy Tower / Reston, VA, USA
Specifier Duda Paine Architects / Architect
Product NEW/LIGHT 3D lightbox system using T0B / White Translucent membranes and custom aluminum operable skeleton



DETAILS.

Below are some of the details we have engineered for our projects. We often create and extrude new profiles to meet the design or technical needs of a specific project.

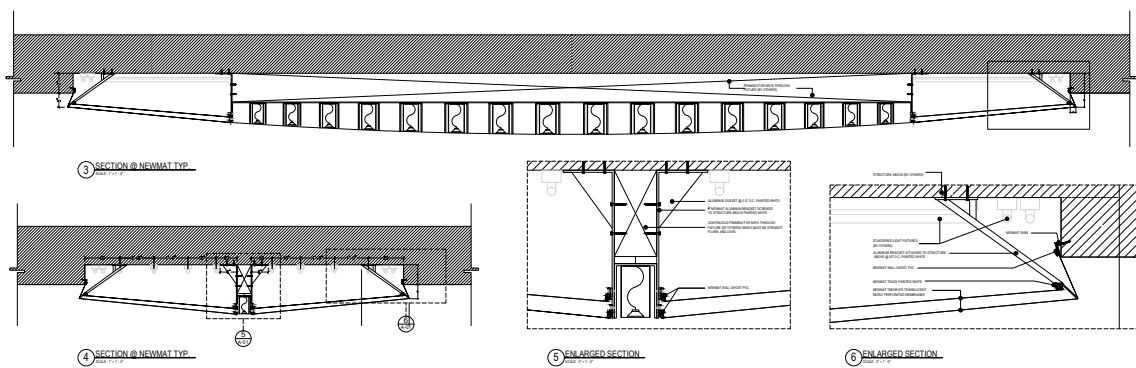
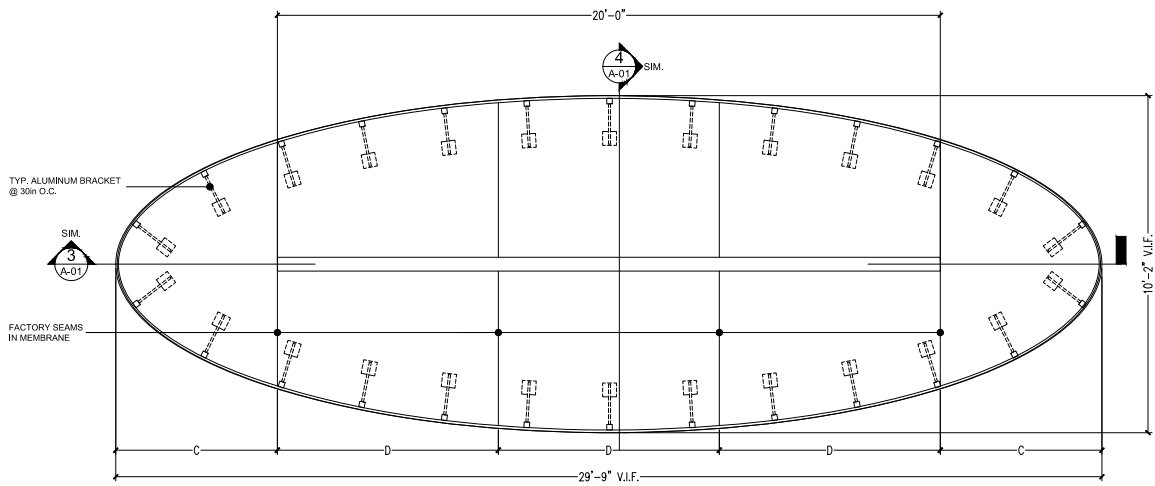


Client Yotel / New York, NY, USA
Specifier Rockwell Group / Architect and Focus Lighting / Lighting Designer
Product NEW/LIGHT double-layer lightbox system using TOB / White Translucent membranes and custom aluminum fascias



DETAILS.

Below are some of the details we have engineered for our projects. We often create and extrude new profiles to meet the design or technical needs of a specific project.



Client Akin Gump / New York, NY, USA

Specifier Butler Rogers Baskett Architects / Architect

Product NEW/LIGHT and NEW/ACOUSTIC 3D double-layer system using ACT0B / White Translucent micro-perforated membranes with custom aluminum skeleton backlit with fluorescents



Client 605 Third Avenue / New York, NY, USA

Specifier Rockwell Group / Architect

Product NEW/LIGHT 3D double-layer system using T0B3 / Soft White Translucent and T11 / Clear Frosted membranes with custom aluminum skeleton backlit with VLT LED panels





Client Financial Institution Cafeteria / New York, NY, USA

Specifier Gensler / Architect

Product NEW/LIGHT single-layer system using TOB White Translucent membranes with friction tracks and backlit with LEDs





PROFILES.

NEWMAT offers more than 40 different profiles in either PVC or aluminum. They are chosen for a project based on their aesthetic, technical, and/or curving abilities. NEWMAT often produces custom profiles to meet the specific design requests of our clients.



Classical PVC



Alux



Classical Aluminum



Corniche PVC



Élégance PVC



Invisible mural Aluminum



Mirage PVC



Invisible Murale PVC



Invisible Plafond PVC



Invisible Plafond Aluminum



Double Classique PVC



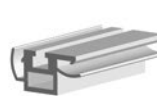
Ghost Tube



Double Ghost Tube



Ghost Structure



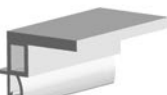
Ghost Cube



Invisible Mural Double PVC



Double Ghost Aluminum



Ghost Tube TS



Ghost Bullnose 45°



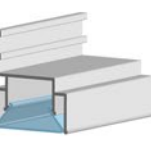
Ghost Bullnose 13°



Ghost 2-LS PVC



Magic LED



Magic LED 50



Ghost Panel



Ghost Framing



Ghost Pivot



Ghost 4-CRC



Ghost Round Tube



Ghost Double Round Tube



Ghost round Tube 6''



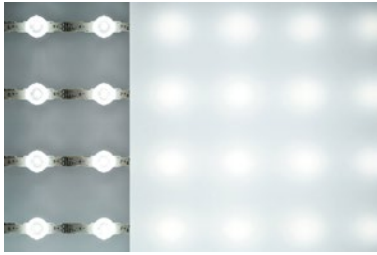
Ghost 2-LS 7'' Aluminum



Ghost Large Pivot



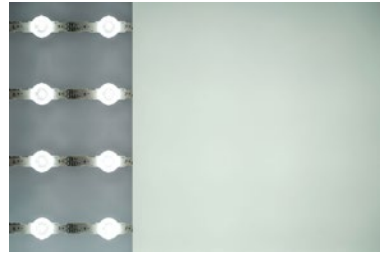
MEMBRANE OPTIONS.



T1



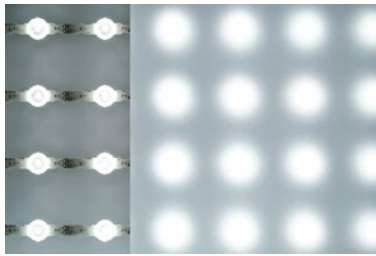
T3



T4



T10



T11



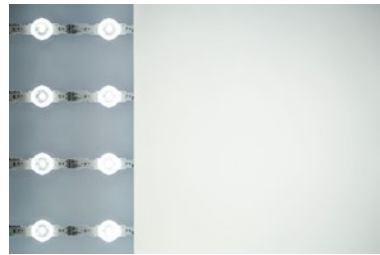
T035



TOB



TOB2



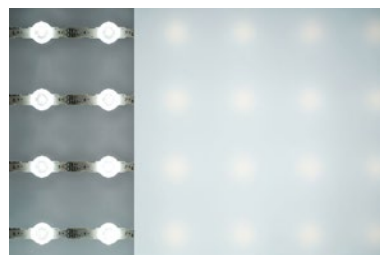
TOB3M



TOB4



TOB5



TOB6



TOB1320

Client Baker McKenzie / Chicago, IL, USA

Specifier Goettsch Partners / Architect and One Lux Studio / Lighting Designer

Product NEW/LIGHT double-layer system using TOB / White Translucent and T10 / Clear membranes backlit with LEDs









NEWMAT USA
81 Mahan Street, West Babylon, NY 11704, USA
Tel : 631-261-1498 / Fax : 631-261-1756
newmat@newmatusa.com

www.newmatworld.com